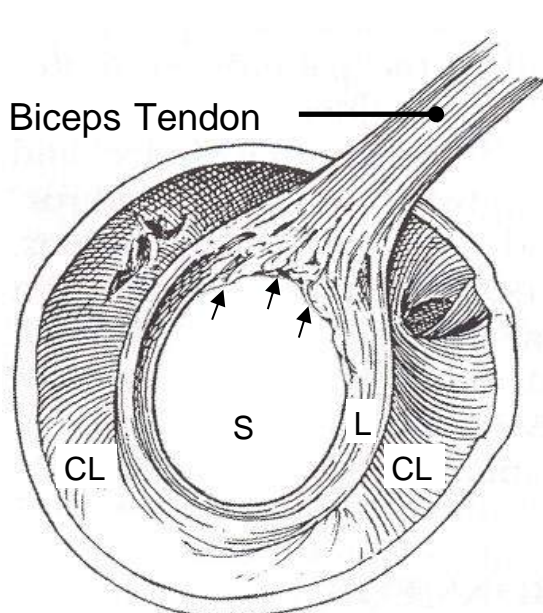
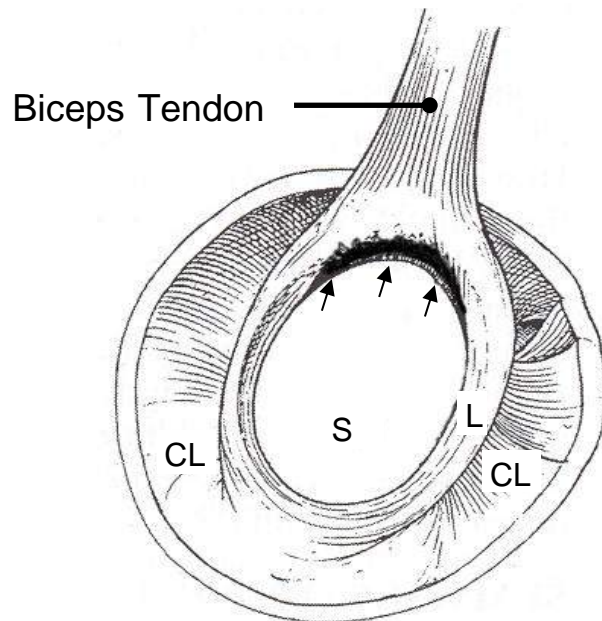


"SLAP" Tears of the Shoulder

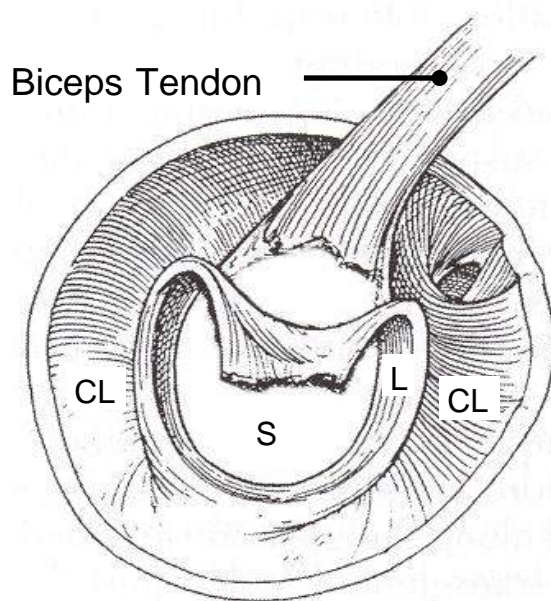
SLAP = superior labral anterior-posterior tear



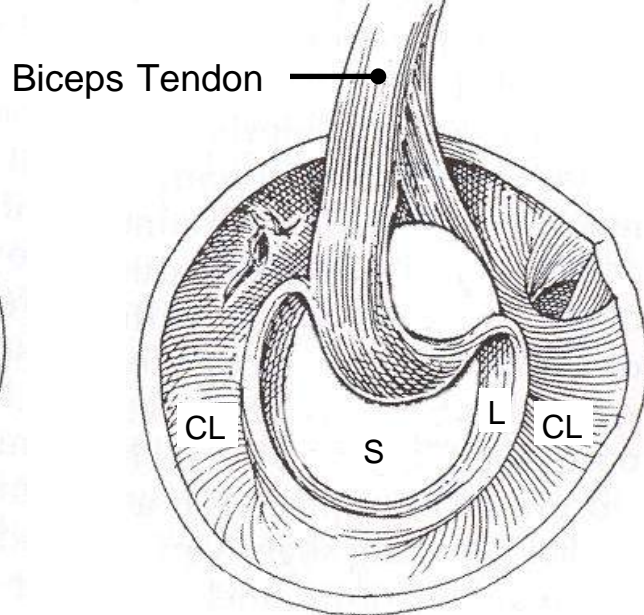
Type 1



Type 2



Type 3



Type 4

S = socket of shoulder joint, **L** = labrum ("lip" of socket),
CL = capsular ligaments around the shoulder joint

- Type 1** - superior labral fraying and degeneration (see arrows).
Type 2 - detachment of the biceps anchor (see arrows).
Type 3 - superior labral bucket-handle tear, biceps anchor intact.
Type 4 - superior labral bucket handle-tear extending into biceps tendon.

